

Quick-Build-Containers SC6000 + SC3000

Ask for our instruction video!

Assembly:

With 2 men, a 3x2m container can be ready in just 5 minutes.



The Quick-Build-Container is efficient and easy to put together:

1. Position the side and end walls.

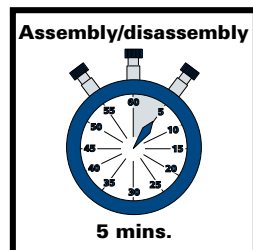


2. Hang the door on its hinges.

3. Put on the roof – finished!



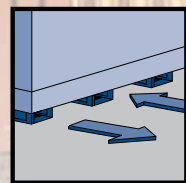
Stable and Safe:



Patented quick lock fasteners – assembly without tools!



OSB wooden floor, load bearing capacity up to 500kg/m²



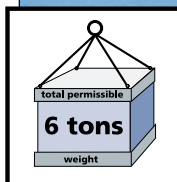
Ground ventilation for long lasting protection against damp and rotting.



TÜV tested with GS mark

Metal runners for safe forklift transport

Transport:



Can be lifted by crane up to 6 tons, 4 jack rings standard, TÜV tested with GS mark

The differences at a glance:

	SC6000	SC3000
Total permissible weight	6 tons	3 tons
TÜV tested / GS mark	●	●
Reinforced floor and roof frames	●	-
Jack rings	●	●
Door catch	●	-
Protective corner caps	●	-
Available in 2 – 6m	●	-

Technical Data for Quick-Build-Containers

	2x2 m	2x2 m	3x2 m	3x2 m	3x2 m	4x2 m	4x2 m	4x2 m	5x2 m	6x2 m
ASSEMBLY in a few minutes Quick & easy!										
Total width external / internal (mm)	2100/1980	2100/1980	2100/1980	2100/1980	2100/1980	2100/1980	2100/1980	2100/1980	2100/1980	2100/1980
Total depth external / internal (mm)	2100/1980	2100/1980	3100/2980	3100/2980	3100/2980	4100/3980	4100/3980	4100/3980	5100/4980	6100/5980
Total height external / internal (mm)	2100/1930	2100/1930	2100/1930	2100/1930	2100/1930	2100/1930	2100/1930	2100/1930	2100/1930	2100/1930
Door size width x height (mm)	1305x1890	1950x1890	1305x1890	1305x1890	1950x1890	1305x1890	1305x1890	1950x1890	1950x1890	1950x1890
Series SC6000 Model/Order No.	-	SC6000 2x2 SZ	-	-	SC6000 3x2 SZ	-	-	SC6000 4x2 SZ	SC6000 5x2 SZ	SC6000 6x2 SZ
Net weight (kg)	-	310	-	-	410	-	-	510	610	710
Total permissible weight (kg)	-	6000	-	-	6000	-	-	6000	6000	6000
Series SC3000 Model/Order No.	SC3000 2x2 SE	SC3000 2x2 SZ	SC3000 3x2 LE	SC3000 3x2 SE	SC3000 3x2 SZ	SC3000 4x2 LE	SC3000 4x2 SE	SC3000 4x2 SZ	-	-
Net weight (kg)	250	250	350	350	350	450	450	450	-	-
Total permissible weight (kg)	3000	3000	3000	3000	3000	3000	3000	3000	-	-

Useful Accessories

Everything just slots into place!
ASSEMBLY
Quick & easy!

Shelving Systems



Shelving System

In galvanized steel, permissible weight of 50kg per bracket. Self-supporting construction allows for full use of available floor space. Adjustable in height in 100mm steps.

Technical Data for Shelving Systems, Depth 420mm

Comprising:	Model	Shelving System 1	Shelving System 2	Shelving System 3
Shelving upright		2 x	2 x	3 x
Shelf arm		6 x	6 x	9 x
3 Shelves à		1m	2m	3m
Order No.		RS-3-1-420	RS-3-2-420	RS-3-3-420

Further Options

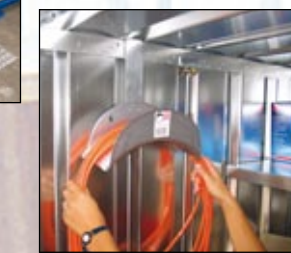


Anti-Theft Security Bar
Additional steel bar for protection for single or double doors.

Single door Order No. ZDSV-1
Double door Order No. ZDSV-2

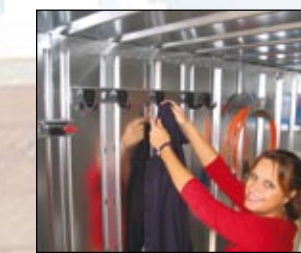


Access Ramp
Suitable for single and double doors. Made of anti-slip aluminium-duett-sheeting. Large: 870mm x 1465mm Order No. ZAFR920
Small: 500mm x 500mm Order No. ZAFR500



Hose and Cable Suspension
Slot-in, galvanized steel suspension for garden hoses, cables etc.

Order No. ZSKA



Clothes Rail
Slot-in, galvanized steel rail with hooks for clothes, hats etc.

Order No. ZKHL-C



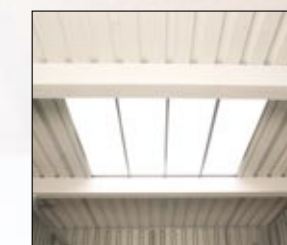
Tool Rail
Slot-in, galvanized tool rail for spades, shovels, brooms etc.

Order No. ZGL-C



Electrical Supply
Comprising: light (60W), on/off switch, electrical socket, fuse box. Installation by customer.

Order No. ZEP-C



Light Panel
(1 x 2m) integrated roof light panel offers light without electricity.

Order No. ZDLZ-1x2



Window
Sliding window with screen shutters, 800 x 800mm (w x ht.).

Order No. ZSFG



External Painting
With 2K paint in all RAL colours.

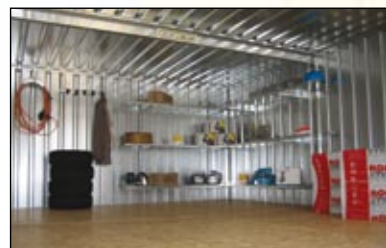
Order No. ZAL

Container Combination SCC

Our Quick-Build-Containers are available in extra wide (side-to-side) or long (end-to-end) designs. These Container Combinations offer 7 different sizes and are a cost-effective solution for every storage problem. A change of location is simple, at any time! Ask our specialists!

Side-To-Side Version

By linking the side walls, containers can reach up to 6m in width and 4m in depth. Up to 3 Standard Containers can be joined together sideways as a Container Combination - e.g. as a small warehouse.



Container with two side-to-side links

Technical Data 'Side-to-Side Version'

Model/Order No.	SCC 3x4 LE	SCC 3x6 LE	SCC 4x4 LE	SCC 4x6-LE
Total width external / internal (mm)	4200 / 4080	6300 / 6180	4200 / 4080	6300 / 6180
Total depth external / internal (mm)	3100 / 2980	3100 / 2980	4100 / 3980	4100 / 3980
Total height external / internal (mm)	2100 / 1795	2100 / 1795	2100 / 1795	2100 / 1795
Door size width x height (mm)	1305 x 1890	1305 x 1890	1305 x 1890	1305 x 1890

End-To-End Version

As long as a 40ft container, but definitely the test winner: dismantled, flat-packed delivery for minimal freight charges. Ask for your individual container, e.g. for the safe and dry storage of sanitation and heating pipes, pole material, pipes for building construction and civil engineering and much more.



Technical Data 'End-To-End Version'

Model/Order No.	SCC 8x2-SZ	SCC 10x2-SZ	SCC 12x2-SZ
Total width external / internal (mm)	2100 / 1980	2100 / 1980	2100 / 1980
Total depth external / internal (mm)	8200 / 8080	10200 / 10080	12200 / 12080
Total height external / internal (mm)	2100 / 1930	2100 / 1930	2100 / 1930
Door size width x height (mm)	1950 x 1890	1950 x 1890	1950 x 1890

For useful accessories for the SCC, please see the previous page.

Storage space in steel – state-of-the-art solutions! More than 25 years of BOS Containers

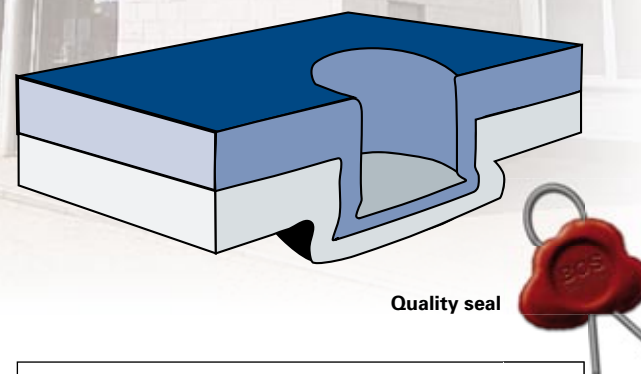
BOS is the market leader in the field of Material Containers and manufactures containers and warehouses as well as products for storage and safety of tools.

Professional metalworking for perfect surfaces



Newest Best-Point technology - the material surface remains undamaged

At BOS only galvanized fine sheet steel is used. Building components are joined together using the unique Best-Point technology whereby in contrast to conventional production methods, the protective zinc coating is not damaged. A 10 year anti-corrosion guarantee is given.



Standard Containers are available directly from stock.



Delivery:

- Dismantled delivery – saves freight costs
- 7 containers can be stacked on top of each other – saves storage costs
- Fast delivery within 3-5 days – can be used immediately



BOS
Best Of Steel

BOS GmbH
Lütkenfelde 4
D-48282 Emsdetten

Phone: +49 (0)2572 203-170
Fax: +49 (0)2572 203-179
E-Mail: Container@BestOfSteel.de
www.Container-BestOfSteel.de

Further products from the BOS range:



Storage container ThermoSafe Factory Equipment Gas Cylinder Container Quick-Build-Warehouses

Please ask for further information!

Storage space in steel ... state-of-the-art solutions!

